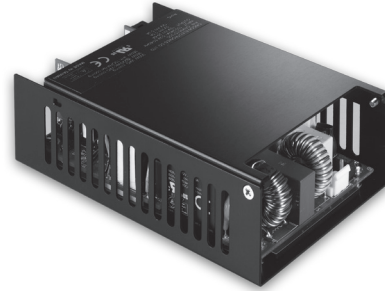
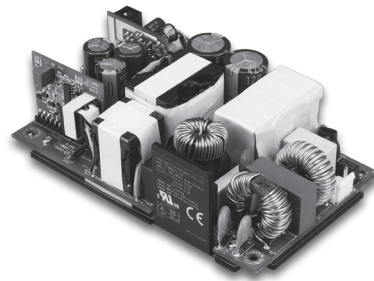


CFM361S

S E R I E S

360 WATT AC-DC POWER SUPPLY WITH PFC



Features

- Universal Input Range 90~264VAC
- 3"x5" Compact Size/CFM361S
- 300W with natural convection @ 220Vac/CFM361S
- 360W with natural convection @ 220Vac/CFM361SXXXC
- 360W with baseplate cooled -20~85°C/CFM361SXXXC
- Meets EN60950 and EN55022 Class B
- Active PFC Meets EN61000-3-2
- High Efficiency Up to 93.5% Typical
- High Power Density Up to 15W/Inch³
- Remote Voltage Sense
- PS ON/OFF Remote Control
- +5V Stand-by Output Power
- 12V fan output
- Structure Patented

MODEL	OUTPUT VOLTAGE	OUTPUT CURRENT	RIPPLE & NOISE NOTE1	VOLTAGE ADJ. RANGE	VOLTAGE ACCURACY NOTE2	LINE REGULATION NOTE 3	LOAD REGULATION NOTE 4	% EFF. (Typ.) NOTE 5
Main Output Voltage								
CFM361S120	+12 V	29.6 A	120 mVp-p	11.4~12.6 V	±1.0%	±0.5%	±1%	92.5%
CFM361S240	+24 V	14.8 A	150 mVp-p	22.8~25.2 V	±1.0%	±0.5%	±1%	93.5%
CFM361S480	+48 V	7.4 A	150 mVp-p	45.6~50.4 V	±1.0%	±0.5%	±1%	93.5%
Stand-by Output Voltage								
All	+5.0 V	0.5	---		---	---	---	
Fan Output Voltage								
All	+12.0 V	0.3	---		---	---	---	

Specifications

INPUT SPECIFICATIONS:

AC Input Voltage 90~264Vac
 Frequency 47 to 63Hz
 Inrush Current 50A max. @240Vac
 Leakage Current @ 264Vac 3.5mA max.

OUTPUT SPECIFICATIONS:

Total Rated Output Power 360W
 Remote Voltage Sense Compensates for wire Voltage drop
 Adjustment Range on Vout $\pm 5\%$
 Hold-up Time 12ms typ.
 Over Voltage Protection Recycle AC input to restart
 Short Circuit Protection Hiccup mode(Auto Recovery)
 Over Temperature Protection Auto Recovery
 Temperature Coefficient $\pm 0.05\%/^{\circ}\text{C}$

GENERAL SPECIFICATIONS:

Isolation Input to output =4242VDC
 Operating Temperature see Derating Curve
 Storage Temperature -40~85 $^{\circ}\text{C}$
 Humidity 93% RH max. Non condensing
 Switching Frequency 55KHz Typical
 MTBF MIL-HDBK-217F, GB, 25 $^{\circ}\text{C}/115\text{VAC}$ 70k hrs min.
 Altitude 2000m
 Dimensions:
 Open frame versions..5.000x3.000x1.598 inches(127.00x76.20x40.60 mm)
 Covered versions 5.390x3.425x1.697 inches(136.94x87.00x43.10 mm)
 Weight:
 Open frame versions..... 470g (1.04Pounds)
 Covered versions..... 550g (1.21Pounds)

SAFETY AND EMC:

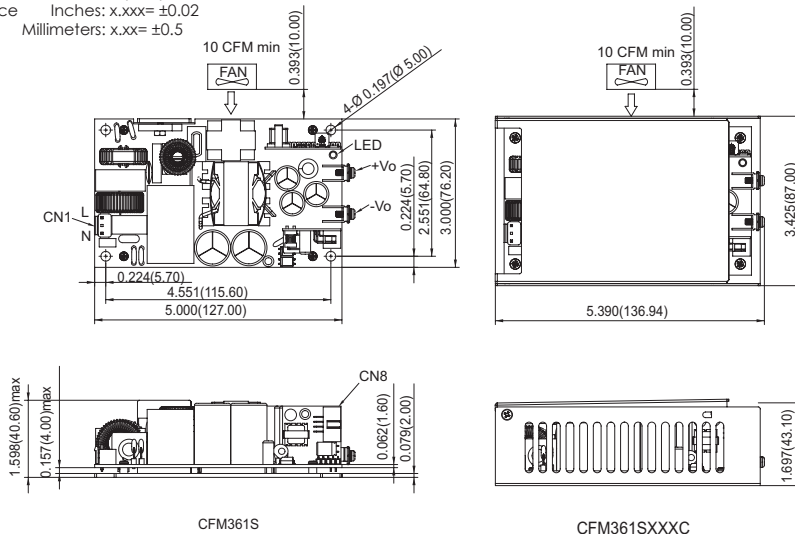
Emission and Immunity EN55022 Class B, FCC Part 15 Class B
 EN61000-6-3, EN61000-3-2, EN61000-3-3
 EN55024, EN61000-6-1, EN61204-3
 Safety IEC60950-1, EN60950-1, UL60950-1

NOTE:

1. Add a 0.1 μF ceramic capacitor and a 47 μF E.L. capacitor to output for Ripple & Noise measuring @20MHz BW.
2. Voltage accuracy is set at 60% rated load and 25 $^{\circ}\text{C}$.Ta.
3. Line regulation is measured from High Line to Low Line with rated load.
4. Load regulation is measured at 60% \pm 40% rated.
5. Typical efficiency at 230Vac and Full Load at 25 $^{\circ}\text{C}$.
6. Power dissipation (Pd): $\text{Pd} = \text{Pi} - \text{Po} = \text{Po}(1 - \eta) / \eta$
7. Input connectors (CN1) wafer with TAIWAN KING PIN TERMINAL PVHI series and mate with JST housing VHR series or equivalent.
 Output connectors (CN8) wafer with TAIWAN KING PIN TERMINAL PIDC254M1L series and mate with Molex housing 70450 series or equivalent.

Mechanical Specification

All Dimensions In Inches(mm)
 Tolerance Inches: x.xxx= ± 0.02
 Millimeters: x.xx= ± 0.5



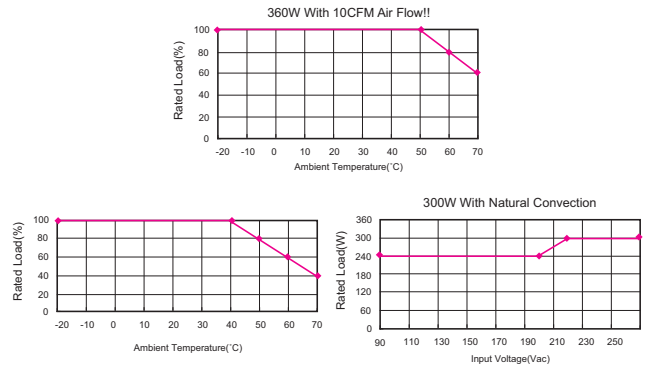
CN8:

PIN CONNECTION

Pin	Function	Pin	Function
1	+SENSE	8	-SENSE
2	GND	7	ENABLE
3	GND	6	+5VBS
4	FAN Output-	5	FAN Output+

Note: Pull down Enable to activate the PSU

CFM361S Series Derating Curve



CFM361SXXXC Series Derating Curve

